

INSTALLATION INSTRUCTIONS

DESCRIPTION: Engine Protection Kit
 PART NUMBER: 2CR-F43B0-V1
 MODEL: '15~ YZF-R1, YZF-R1M, YZF-R1S



⚠ WARNING

Please read and understand these instructions completely before installation to avoid possible injury, or damage to the accessory or vehicle.

NOTICE:

This installation requires a torque wrench and should be performed by an authorized Yamaha dealer or other qualified technician.

WARRANTY INFORMATION:

Genuine Yamaha Accessories are covered by a one-year limited warranty against defects in material or workmanship. Labor for replacement of defective components is not covered. See your Yamaha dealer for a copy of the warranty statement.

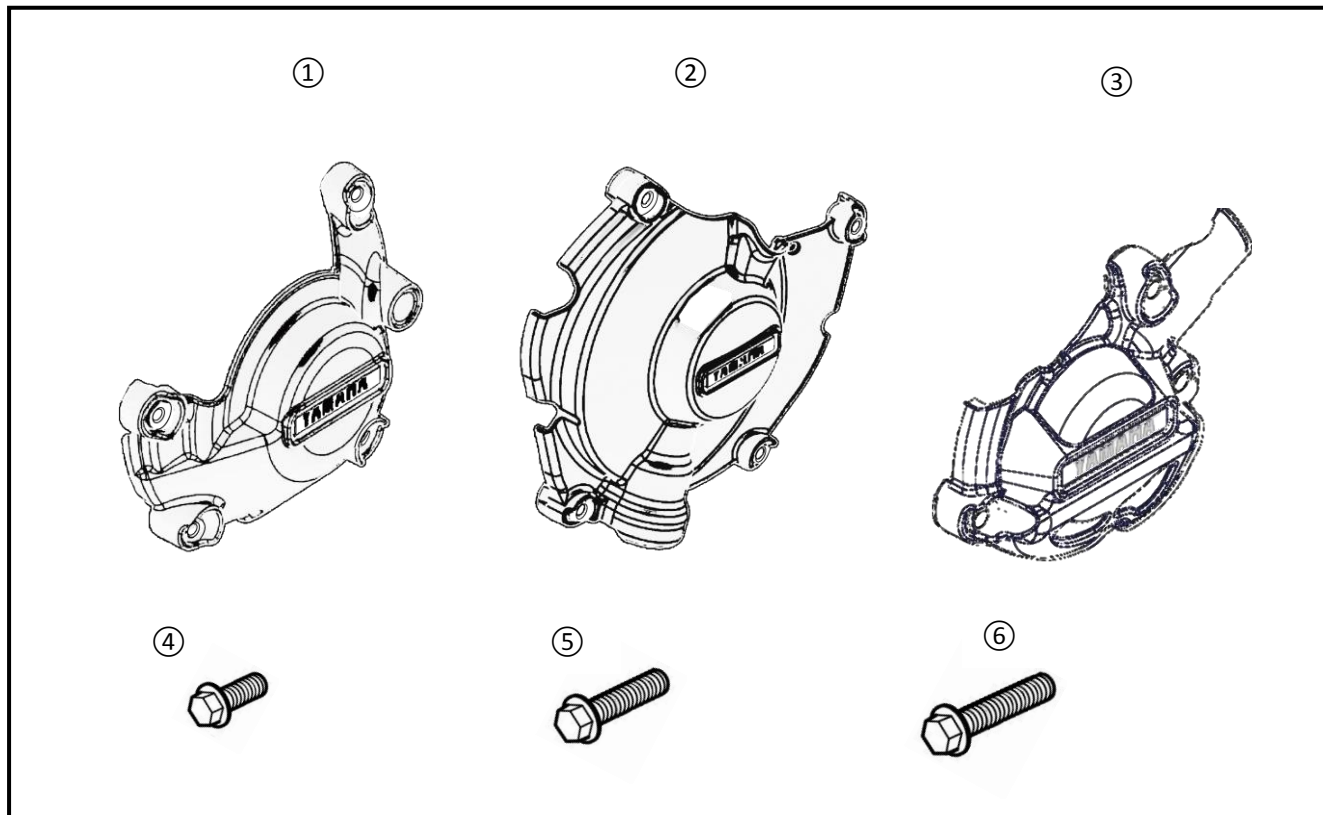
DEALER OR INSTALLER:

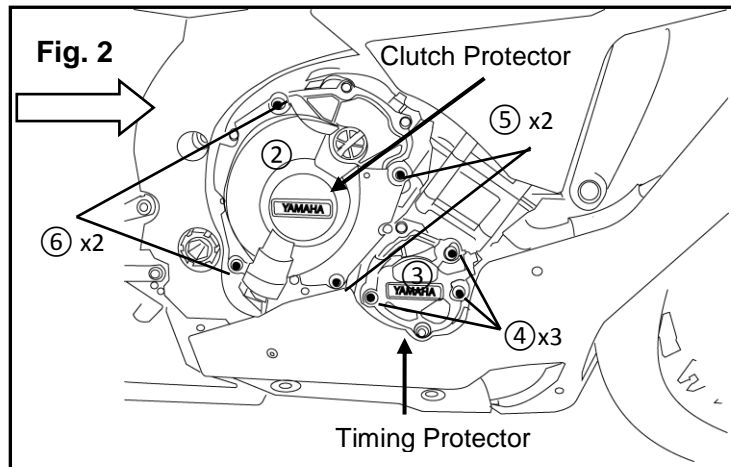
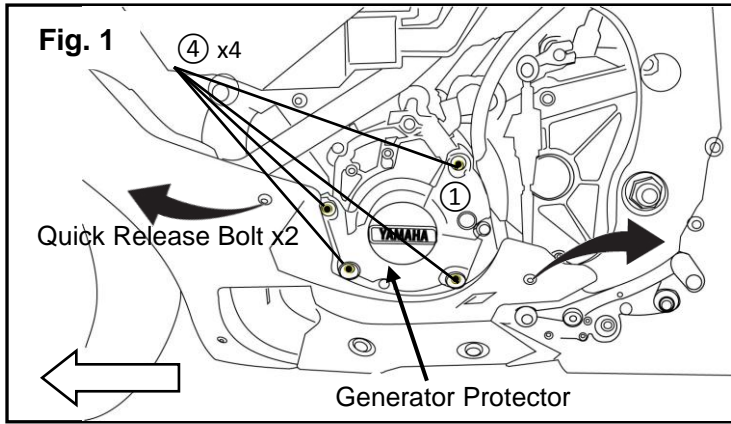
These instructions contain important information for future reference and *must* be given to the customer.

PARTS LIST:

No.	Part Number	Description	Qty
--	2CR-F43B0-V	Engine Protection Kit	--
①	*	Generator Protector (Guard 1)	1
②	*	Clutch Protector (Guard 2)	1
③	*	Case/Timing Protector (Guard 3)	1
④	*	M6x35mm Hex Head Bolt (Guard 1 & Guard 3)	7
⑤	*	M6x45mm Hex Head Bolt (Guard 2)	2
⑥	*	M6x50mm Hex Head Bolt (Guard 2)	2

* Part supplied with kit only and not available separately.





PREPARATION:

- Stand motorcycle on a secure and level surface.
- Clean all mounting surfaces before beginning installation
- The engine and radiator should be cool to the touch for this installation.

INSTALLATION:

1. On the left side of the motorcycle, loosen the 2 quick release bolts shown in Fig.1. Retain them for reuse.
2. Remove 4 bolts from the generator cover. They will not be reused.

Note: The stock bolts removed during this install should not be reused. The coating applied by the factory to these bolts make them one time use only.

3. Install the Generator Protector (1) over the stock cover. You will be able to gently pull back the fairing on the left side. Install the cover with 4 M6 x 35mm Hex Head Flange Bolts (4) through the mount holes in the Generator Cover. Torque these 4 bolts to 6 Nm (.6m-kgf, 4.4 ft-lbf). See Fig. 1.
4. Fasten 2 quick release bolts removed in step 1.
5. On the right side, remove 4 bolts from the clutch cover and 3 bolts from the timing cover as shown in Fig. 2
6. Install the Clutch Protector (2) over the stock clutch cover. Install the 2 M6 x 45mm Hex Head Flange Bolts (5) and 2 M6x50mm Hex Head Flange Bolts (6) through the mount holes in the Clutch Protector and into the engine case. Torque these 4 bolts to 6 Nm (.6m-kgf, 4.4 ft-lbf). See Fig. 2.
7. Install the Case/Timing Protector (3) over the stock case/timing cover. Install the 3 M6 x 35mm Hex Head Flange Bolts (4) through the mount holes in the Case/Timing Protector. Torque these 3 bolts to 6 Nm (.6m-kgf, 4.4 ft-lbf). See Fig. 2

MAINTENANCE:

Periodically check all hardware for tightness and secure as necessary.

CARE AND CLEANING:

Wash using a mild soap and water solution and soft cloth.

CUSTOMER SERVICE:

For further information see your Yamaha dealer.

ESTIMATED TIME TO INSTALL: .5 HR